

1966 Mustang Parking Brake Ratchet Spring Replacement

\$7.95 from American Mustang Parts, Rancho Cordova CA

Search for “park brake spring”

https://american-mustang.com/index.php?main_page=product_info&cPath=4_105&products_id=5551

PARKING BRAKE HANDLE— MUSTANG

REMOVAL

1. Remove the two screws that hold the handle bracket on the instrument panel. Remove the attaching screws and the insulator bracket (Fig. 28).

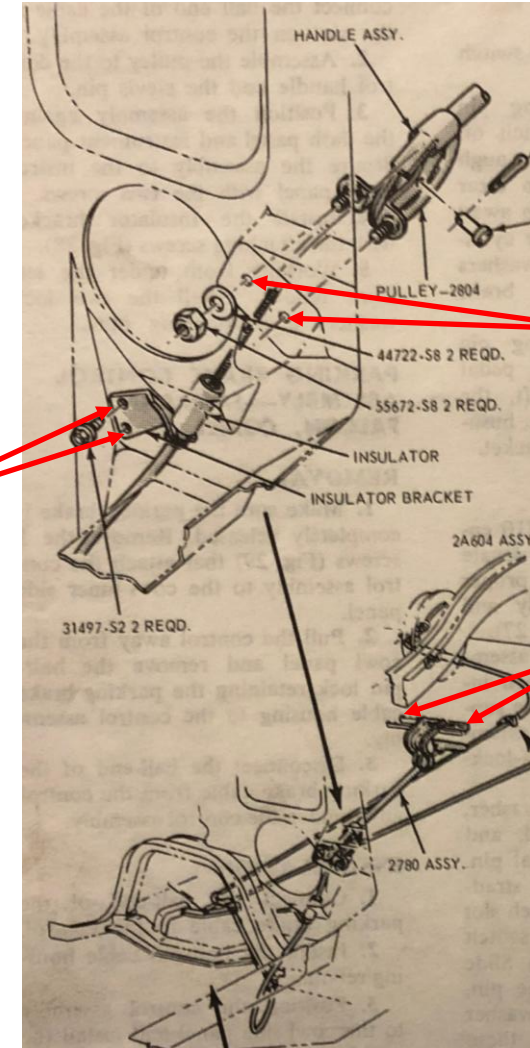
2. Remove the two nuts and lock washers that secure the control to the dash panel.

We didn't do this. This might have made it easier.

1b

2

1a

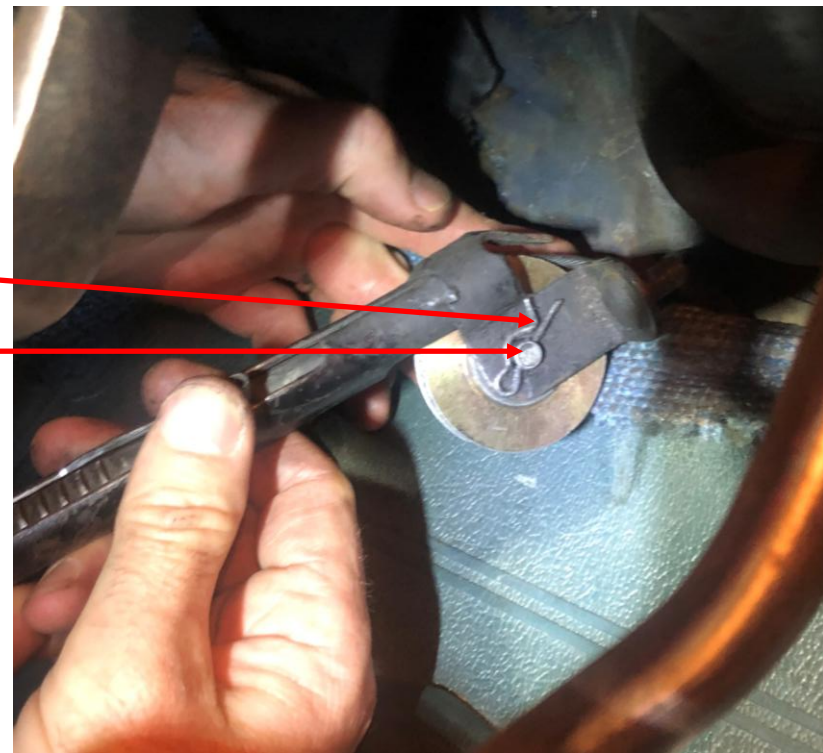


Remove parking brake assembly
from mounting points.

Then remove the clevis pin clip.

Then...

3



3. Remove the clevis pin that secures the pulley to the control handle assembly.
4. Disengage the locking rod and remove the ball on the cable from the slot in the control assembly.

4



5. Remove handle assembly from vehicle.

6. Remove the locking rod.



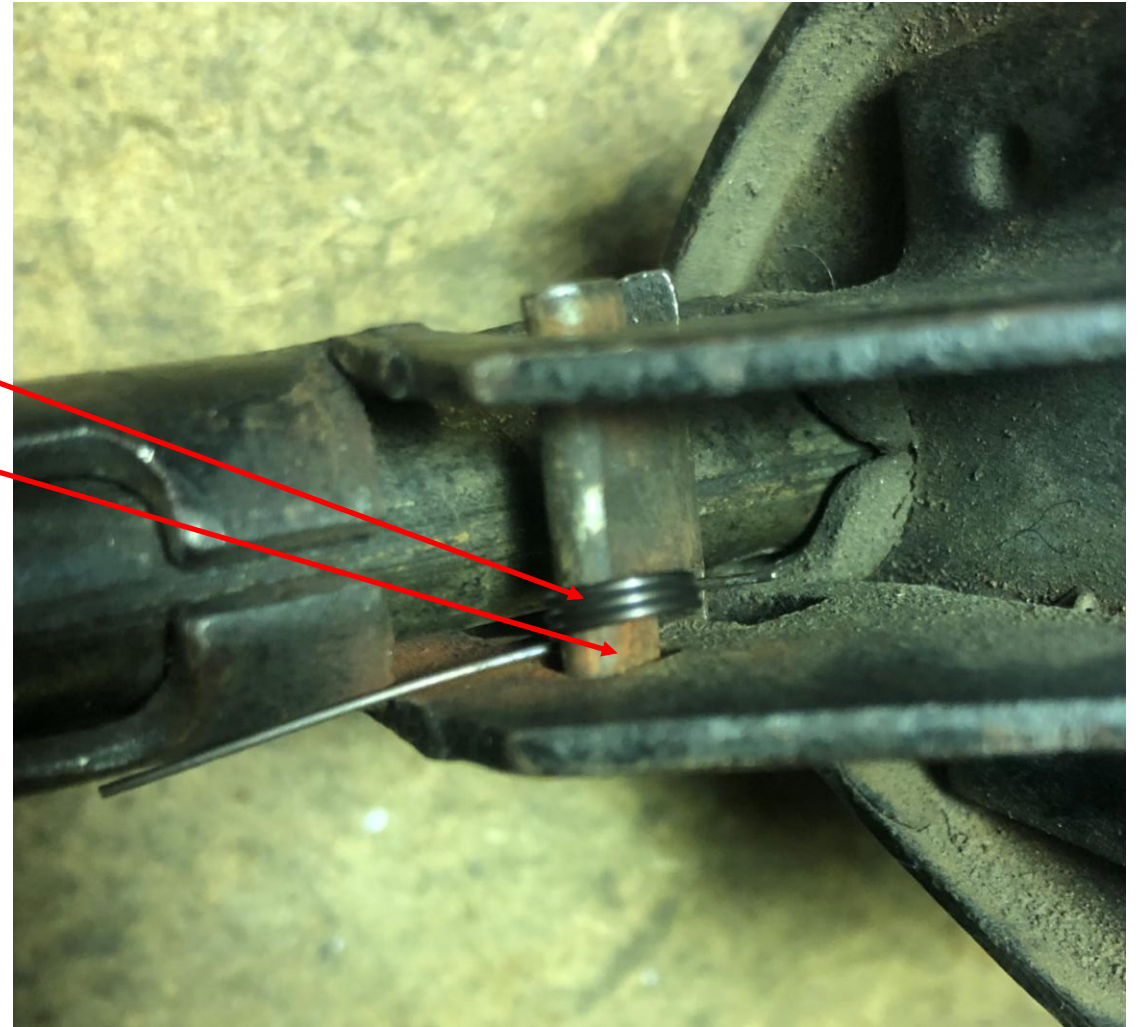
7. Slide the brake handle shaft out of the assembly.

8. Remove the ratchet and broken spring.



9. Install the new spring.

10. Install the ratchet.



Make sure pointy edge aims in to the center of the shaft to lock it from retracting when not twisted as shown.



11. Slide the brake handle shaft back in to the assembly.

12. Install the locking rod.



INSTALLATION

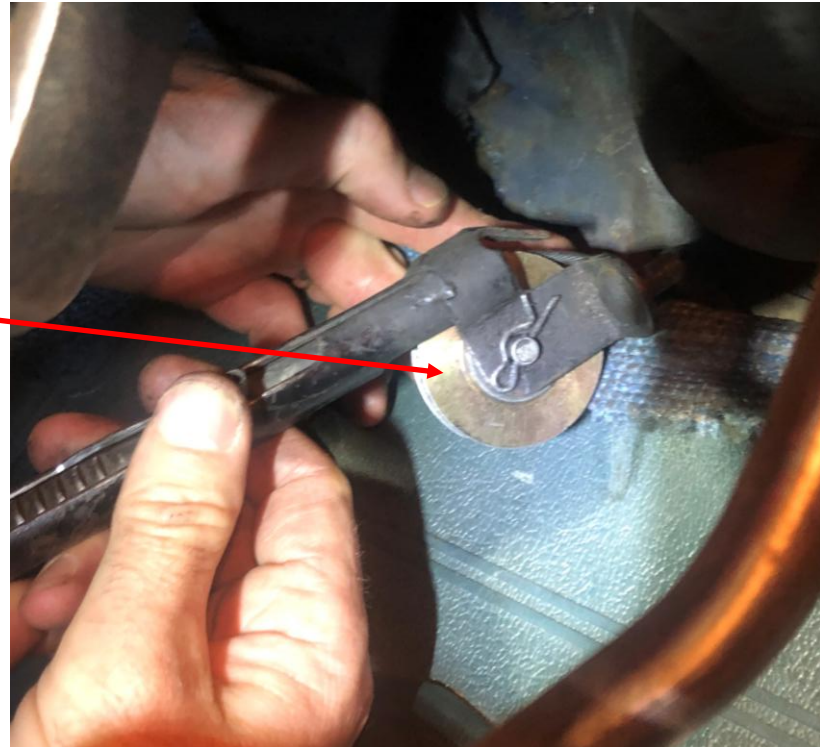
1. Disengage the locking rod and connect the ball end of the cable to the slot on the control assembly.

2. Assemble the pulley to the control handle and the clevis pin.

1



2



3. Position the assembly against the dash panel and instrument panel. Secure the assembly to the instrument panel with the two screws.

4. Install the insulator bracket with the attaching screws (Fig. 28).

5. Working from under the left front fender, install the two lock washers and attaching nuts.

